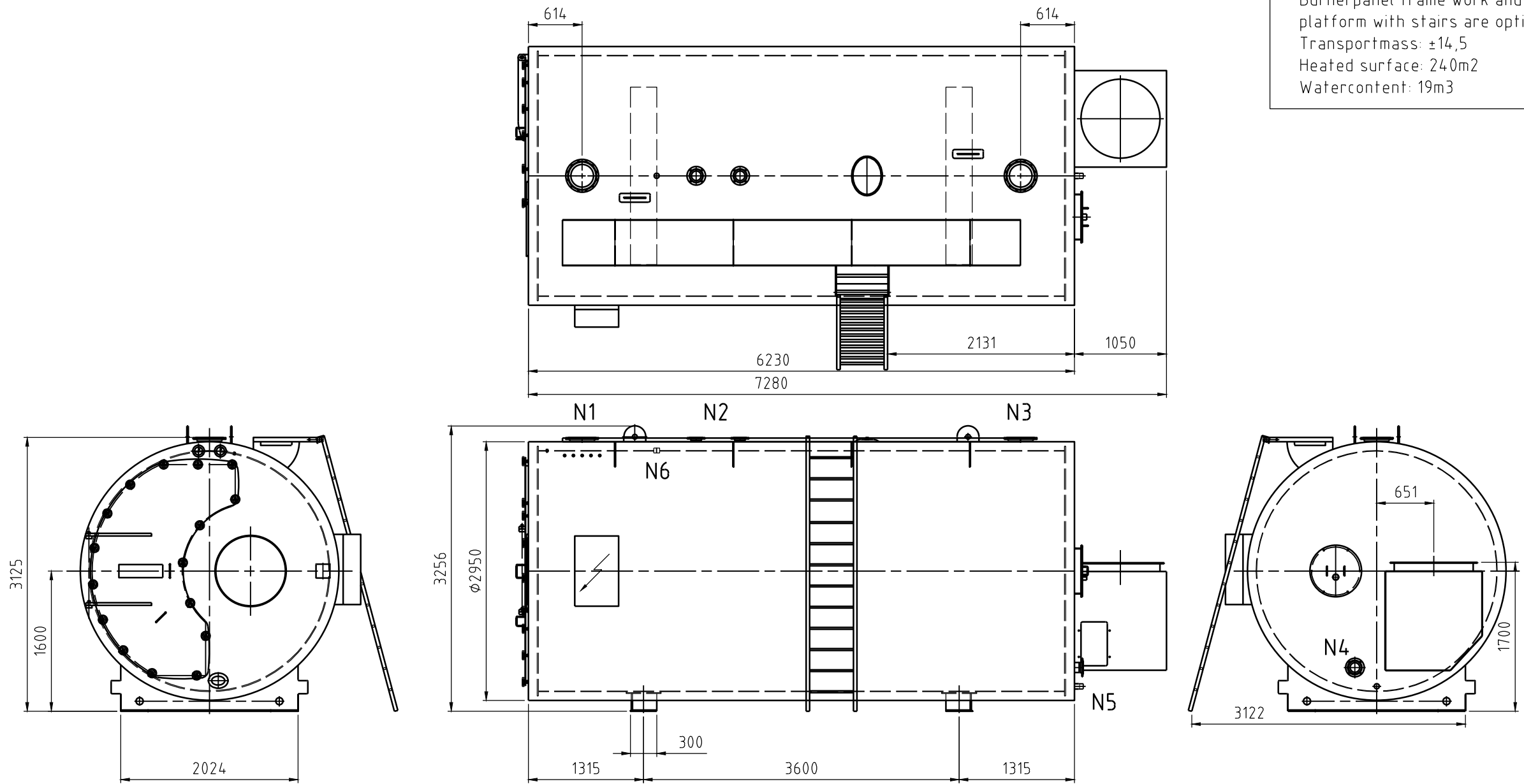


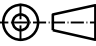


Burnerpanel frame work and platform with stairs are optional.
 Transportmass: ±14,5
 Heated surface: 240m²
 Watercontent: 19m³



In case of an order exact boiler weight and measurements will be given on request. Subject to modifications.

NOZZLE CHART (DIN)			
	NAME	DN	PN
N1	SUPPLY	250	6
N2	SAFETY VALVES (2x)	100	16
N3	RETURN	250	6
N4	SHUNT	100	6
N5	DRAIN	2"	-
N6	LOW WATER LEVEL	2"	-

Index	Date	Drawn	Checked	Modifications
				
Drawing number: 30550800.HKB				Size: A3
				Scale: 1:40
Title: LINE COMPACT 7.0				Modification: 1
Project number: TK-Top Boiler				Projection: 
Customer: TK-Top Boiler				Drawn: NG
				Date: 24-04-2014
				Checked: RH
				Date: 24-04-2014

The information contained in this drawing is the sole property of HKB Ketelbouw B.V. Any reproduction in part or as a whole without the written permission of HKB Ketelbouw B.V. is prohibited.



Woudeselaan 22, 2635 CH Den Hoorn, Nederland
 Telefoon: +31(0)15-2125547 Fax: +31(0)15-284 0505
 E-Mail: info@tk-topboiler.nl